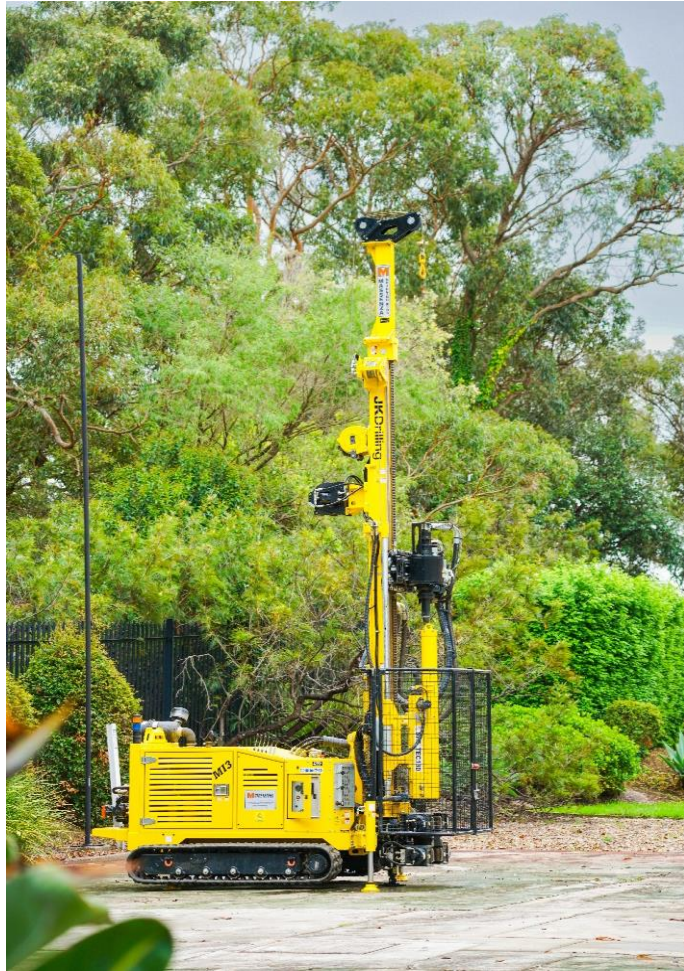


## JK330



*Compact rig – ideal for restricted access where deeper boreholes are required*

(Mitsubishi) XO27XH	DIMENSION
A HEIGHT FOR WORK (mast vertical, ground surface horizontal – add up to 1m for slopes up to 1:10 or 6 deg)	6.30m
B HEIGHT FOR TRAVEL ON SITE (mast horizontal)	2.25m
C HEIGHT FOR TRAVEL ON ROAD (mast horizontal, including truck)	3.40m
D WIDTH FOR TRAVEL ON SITE (see note below regarding safe work) *	1.55m
E RIG LENGTH FOR TRAVEL ON SITE (mast horizontal)	5.10m
F LENGTH FOR TRAVEL ON ROAD (including truck)	9.30m
G WORKING RIG LENGTH (mast vertical) **	3.60m
SUITABLE UP TO DEPTH ***	80m
WEIGHT OF RIG ON SITE	3.65t + equip
REGISTERED VEHICLE WEIGHT (TARE)	7.80t
MAX WEIGHT ON ROAD (GVM)	14.0t

- Solid flight augering
- Standard Penetration Test (SPT)
- Undisturbed tube sampling
- Diamond Coring (NMLC and HQ sizes)
- Down hole hammer and casing advancer systems
- Wash boring and mud drilling
- Single stage packer testing
- Installation of groundwater monitoring wells
- Installation of inclinometer casing
- Borehole vane shear test equipment for measuring the undrained shear strength of soft clays to depths in excess of 11m is available
- Ventilation equipment available for working inside buildings

### Notes

\* Room to move around equipment for safe operation is required. Additional 2m required if recirculation of drilling mud is required when coring.

\*\* Space is required for equipment handling during operation. Note also that length required for unloading = travel length + rig length + ramp length.

\*\*\* Will require support truck for equipment in excess of standard equipment load.

[www.jkgroup.net.au](http://www.jkgroup.net.au)

T: +61 2 9888 5000

JK Drilling Pty Ltd ABN 89 003 903 517

115 Wicks Road, Macquarie Park, NSW, 2113 – PO Box 976 North Ryde BC, NSW, 1670